

We're here to help

[View this email in your browser](#)



June 2020

How has Covid-19 affected you and your family?



How has the coronavirus outbreak affected you and your loved ones? We would like to hear your experiences of health, care and community services during the pandemic. What's working well and what could be better?

You can complete our online survey at www.smartsurvey.co.uk/s/WiltsCoronavirus/

Everything we hear will be shared with local and national NHS, Wiltshire Council and service providers.

The survey can also be completed over the phone - call us on 01225 434218 to arrange and a member of the Healthwatch Wiltshire team will call you back.

You can also share your story on any health and social care issue by using our [online](#)

form, calling 01225 434218 or emailing info@healthwatchwiltshire.co.uk

All feedback is anonymous.

Take the survey

Your experiences of the coronavirus pandemic

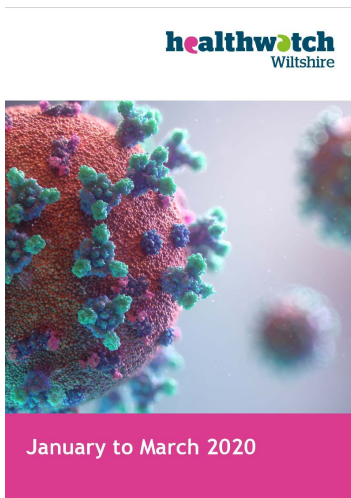


Our [Covid-19 Insight Reports](#) detail what we're hearing from you and provide a snapshot of the work being done by services in response to the pandemic.

These reports will be produced regularly and will be shared with the NHS, council and service and providers, so they can hear where things are working well and identify any gaps.

Read more

How we make a difference

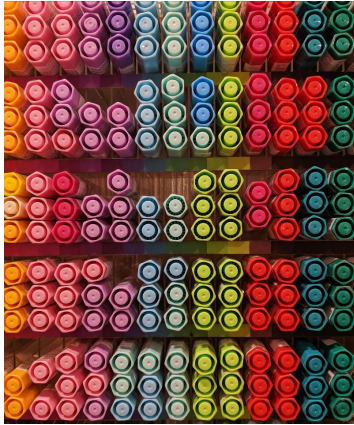


Find out more about what people have been talking to us about, the work we've been doing and the impact we're making in our latest [Quarterly Report](#).

Highlights include responding to the coronavirus pandemic and launching a new [advice and information section](#) on our website, [setting our priorities](#) for the year ahead, and publishing our report on what people told us about Wiltshire's [GP Improved Access Scheme](#).

Read more

Become our new Projects Lead!

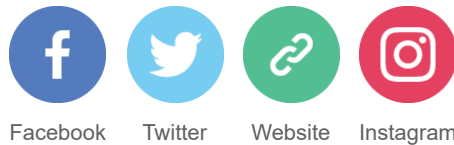


We're looking for someone with engagement and project management skills to become our new Projects Lead.

It's an exciting and wide-ranging role for anyone with a passion for health and social care services.

The closing date for applications is **Sunday 28 June**.

[Apply now](#)



Facebook Twitter Website Instagram

Copyright © 2020 Healthwatch Wiltshire, All rights reserved.

You are receiving this email because you opted in, or subscribed via our website

Our mailing address is:

Independent Living Centre
St George's Road
Semington
Wiltshire
BA14 6JQ

Telephone: 01225 434218

Want to change how you receive these emails?

You can [update your preferences](#) or [unsubscribe from this list](#).

Please do not publish or reproduce this newsletter in full.

This email was sent to <<Email Address>>

[why did I get this?](#) [unsubscribe from this list](#) [update subscription preferences](#)

Healthwatch Wiltshire · The Independent Living Centre · St George's Road · Semington, Wiltshire BA14 6JQ · United Kingdom

